



NEUMANN *CONTRACTORS*



CAPABILITY STATEMENT

The Company

Neumann Contractors is a dredging, fabrication and civil contractor which forms part of the Neumann Group of Companies.

The Neumann Group is a family owned business which was formed in 1949. Neumann Contractors has demonstrated its management; technical and delivery skills over many diversified projects and have earned a reputation with our clients for delivering a quality project.

Our customers benefit from a reliable contractor who works with them in a collaborative manner to add maximum value to a project.

Neumann Contractors multi-disciplined capability provides clients with an assurance that all aspects of their project are being addressed in a professional and economic manner.

Your project will benefit from engaging a reliable contractor who believes in direct and open communication with clients and delivering professional and friendly service.

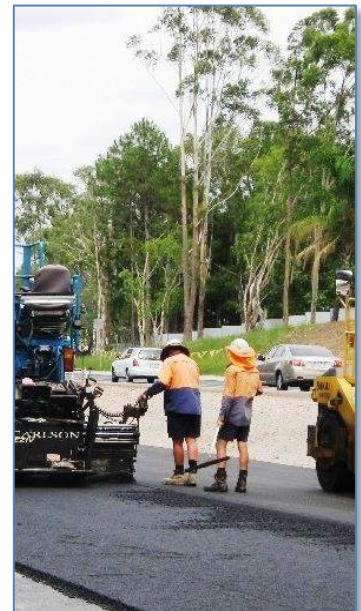
The Neumann Project Managers primary role is to ensure projects run smoothly, on time and to the complete satisfaction of our clients. We do all we can to ensure the lines of communication between the client and Neumann Contractors are maintained at all times.



Dredging



Fabrication



Civil Construction

Dredging

The first dredge was developed in the late 1950's for mineral sand recovery and since then the company has designed and manufactured dredges for a variety of inshore dredging projects. As a result of the successful operation of our own modern and well maintained dredging fleet, we have developed significant dredge operation skills as a dredging contractor.

These dredges have been successfully used for the removal of sand, gravels, clays, slimes and weathered rock, and mine tailings. In harbour and river works, where a variety of natural and dumped materials might be encountered, Neumann dredges have proven their versatility. Neumann's extensive dredging experience also makes our dredges highly suited for a variety of material types often encountered in flood prevention and environmental rehabilitation works.

Neumann Contractors' Dredging Division has extensive contract dredging experience in :

- ♦ Mining and resource dredging
- ♦ Port development
- ♦ Dredging inland waterways
- ♦ Channel maintenance
- ♦ Land reclamation
- ♦ Beach nourishment.

Neumann's dredging expertise has been put to the test on a number of occasions. We have completed more than 200 kilometres of inland channel development and successfully dredged several large scale projects including the Sydney Water Desalination Plant Bay Crossing, Port Botany Container Terminal Expansion, Penrith Lakes Tailings Dredging, Koorangang Berth, the Gold Coast Seaway entrance and the closing of the old Southport bar.

Neumann Contractors also has an extensive range of ancillary dredging equipment including Booster Stations, Pipe Handling Equipment and Marine Support Equipment.

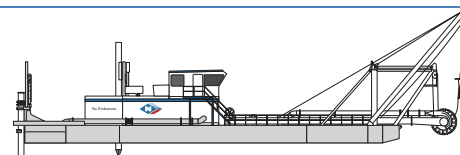


Figure 1 The Nu Bounty, Nu Endeavour and two spreader barges support the pipe laying vessel for the Sydney Water Desalination Plant Bay Crossing Project

Dredging Fleet

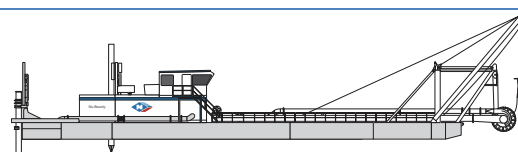
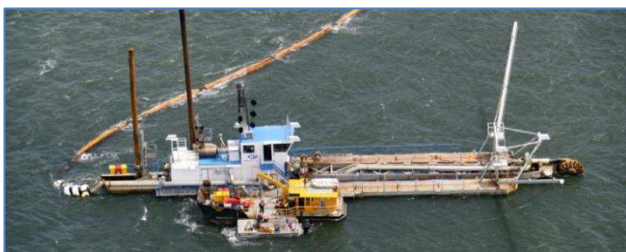
Neumann has a fleet of dredges of varying sizes and capacities to suit a wide range of tasks. All dredges have been built in house and can be specifically adapted to meet your needs.

Nu Endeavour



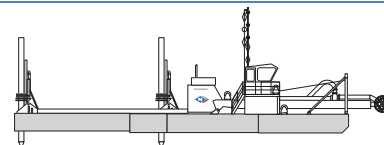
Nominal Production Rate:	650m ³ /hr
Total Horsepower:	1,950 hp
Horsepower on Pumps:	1,400 hp
Pipeline Diameter:	450 mm
Maximum Digging Depth:	15 metres

Nu Bounty



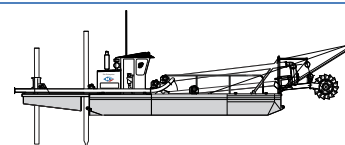
Nominal Production Rate:	650m ³ /hr
Total Horsepower:	1,950 hp
Horsepower on Pumps:	1,400 hp
Pipeline Diameter:	450 mm
Maximum Digging Depth:	22 metres

Nu Compact



Nominal Production Rate:	250m ³ /hr
Total Horsepower:	850 hp
Horsepower on Pumps:	500 hp
Pipeline Diameter:	300 mm
Maximum Digging Depth:	8 metres

Nu Enterprise



Nominal Production Rate:	125m ³ /hr
Total Horsepower:	290 hp
Horsepower on Pumps:	230 hp
Pipeline Diameter:	250 mm
Maximum Digging Depth:	7.5 metres

Nu Kathleen



Nominal Production Rate:	50m ³ /hr
Total Horsepower:	275 hp
Horsepower on Pumps:	200 hp
Pipeline Diameter:	150 mm
Maximum Digging Depth:	6.5 metres

Dredging Projects

Neumann Contractors has extensive contracts dredging experience. Some recent projects include:

Ernest Henry Mine – Tailing Dredging

Type of Project: **Mining - Tailings Dredging**
 Principal: **Ernest Henry Mining (Xstrata Copper)**
 Location: **Near Cloncurry, Queensland**
 Contract Value: **Ongoing**
 Completion Date: **Ongoing**



GPC – Tug Berth & Channel Dredging

Type of Project: **Ports and Harbours**
 Principal: **Gladstone Ports Corporation**
 Location: **Gladstone, Queensland**
 Contract Value: **\$5,500,000**
 Completion Date: **November 2012**



Townsville Marine Project

Type of Project: **Ports and Harbours**
 Principal: **Port of Townsville Limited**
 Location: **Townsville, Queensland**
 Contract Value: **\$6,000,000**
 Completion Date: **April 2011**



Cadia Gold Mine – Tailings Dredging

Type of Project: **Mining – Tailing Dredging**
 Principal: **Newcrest Mining Limited**
 Location: **Cadia Valley, New South Wales (near Orange)**
 Contract Value: **Ongoing**
 Completion Date: **Ongoing**



Sydney Water Desalination Project

Type of Project: **Ports and Harbours - Infrastructure**
 Principal: **MCB Partnership**
 Location: **Kyeemagh, Sydney, New South Wales**
 Contract Value: **\$19,600,000**
 Completion Date: **December 2009**



Lake Illawarra Channel Entrance Dredging

Type of Project: **Ports and Harbours - Maintenance**
 Principal: **NSW Department of Commerce**
 Location: **Lake Illawarra, New South Wales**
 Contract Value: **\$1,820,000**
 Completion Date: **October 2007**



Penrith Lakes – Tailing Dredging

Type of Project: **Mining – Tailings Dredging**
 Principal: **Penrith Lakes Development Corporation**
 Location: **Penrith, New South Wales**
 Contract Value: **\$7,850,000**
 Completion Date: **August 2008**



Fabrication

Neumann Contractors have been operating a Fabrication and Industrial Coatings facility for over 20 years. Our team offers expertise and experience in steel fabrication and industrial coatings. We also manufacture and develop specialised equipment for the dredging, civil construction, mining, concrete and quarry industries, some of which include:

- Purpose built dredges and booster pumps
- Specialised resources for hydraulic system design and manufacture
- Steel fabrication of equipment and machinery
- Bridge components
- Pumps, pontoons and various specialised marine equipment
- Purpose built framework
- EPA approved sandblasting and painting facilities

Queensland Department of Transport and Main Roads Accreditation

Neumann Contractors is accredited as a level three supplier by the Department of Main Roads. This gives the fabrication team the ability and authorisation to provide services on both major and minor infrastructure projects throughout Queensland.



Fabrication Equipment and Services

Neumann Contractors have a well-equipped Workshop and support facilities in Currumbin on the Gold Coast.

Fabrication Workshop

- ◆ Workshop area 1,700m²
- ◆ 2 x 10 tonne overhead cranes
- ◆ 2 tonne column mounted jib crane
- ◆ 3m x 6mm guillotine
- ◆ Punch and shears
- ◆ 1.5m radial arm drill



Industrial Coatings Workshop

The painting and abrasive blast area has been built to meet EPA standards with a 112m² dustproof steel grit blasting bay.

Our on-site facilities include:

- ◆ 15m x 7m x 7m steel grit blast area
- ◆ 975m² prep and paint area



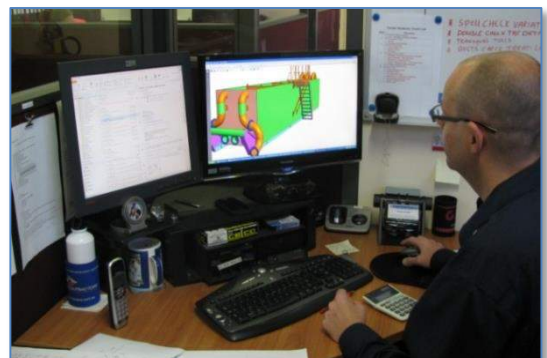
Yard Equipment

- ◆ Yard area 7,500m² fenced
- ◆ 1 x forklifts (17 tonne capacity)
- ◆ 1 x 8 tonne mobile crane
- ◆ 5 x small forklifts (2.5 – 4.0 tonnes)



Services

- ◆ Field service
- ◆ Drafting (Autocad/Inventor)
- ◆ Engineering design
- ◆ Plant division mechanical maintenance
- ◆ In house precision machining



Fabrication Projects

Neumann Contractors have completed projects for a variety of market sectors, including one-off specialised items designed in-house by our engineers specifically to meet our client's needs. Some of the typical types of projects include:

Bins, Chutes and Conveyor Systems



Launder Assemblies and Ancillary Tank Steel Work



Mineral Processing Equipment



Dredge Manufacturing and Refurbishing



Pontoons and Specialised Marine Equipment



Overhead Gantry and Cantilever Signs



Hot Acid Leach Reactor



Bridge and Bridge Components



Booster Pumps and Jet Pump Systems



Specialised Equipment



Inpit Miner



Fuel Pipeline



Civil Construction

Neumann Contractors have been involved in a wide range of civil construction projects ranging in value from \$500,000 up to \$40 million dollars. Our experienced management and engineering team work closely with clients from preliminary design through to project completion. This enables Neumann's to add value to any project through it's cost effective and innovative ideas and with maximum utilisation of resources.

Neumann Contractors are able to offer their expertise in services covering:

- Bulk Earthworks
- Construction of Roads and Bridges
- Site Developments
- Canal Development
- Environmental Management
- Site Rehabilitation
- Management of Acid Sulphate Soils

Neumann Contractors multi-disciplined capability provides clients with an assurance that all aspects of their project are being addressed in a professional and economic manner.

Your project will benefit from engaging a reliable contractor who believes in direct and open communication with clients and delivering professional and friendly service.

The Neumann Project Managers primary role is to ensure projects run smoothly, on time and to the complete satisfaction of our clients. We do all we can to ensure the lines of communication between the client and Neumann Contractors are maintained at all times.



Civil Construction Projects

Neumann Contractors have completed numerous civil construction projects, some recent projects include:

TNRP – Wide Bay Burnett

Type of Project: **Road Reconstruction**
 Principal: **Department of Transport and Main Roads**
 Location: **Wide Bay Burnett Region, Queensland**
 Contract Value: **\$25,000,000**
 Completion Date: **Ongoing**



Wacol Driver Training Facility

Type of Project: **Public Works/Roads/Infrastructure**
 Principal: **Department of Public Works**
 Location: **Wacol, Queensland**
 Contract Value: **\$8,225,000**
 Completion Date: **October 2010**



Bribie Island Road Duplication

Type of Project: **Road/Bridge Construction**
 Principal: **Department of Transport and Main Roads**
 Location: **Caboolture, Queensland**
 Contract Value: **\$20,500,000**
 Completion Date: **April 2010**



Steve Irwin Way – Road Duplication

Type of Project: **Road Construction**
 Principal: **Department of Transport and Main Roads**
 Location: **Glenview, Queensland**
 Contract Value: **\$23,500,000**
 Completion Date: **April 2010**



Exit 54 Pacific Highway – Abraham Road

Type of Project: **Road Construction**
 Principal: **Department of Transport and Main Roads**
 Location: **Coomera, Queensland**
 Contract Value: **\$5,400,000**
 Completion Date: **September 2009**



Hope Island Road Duplication

Type of Project: **Road Construction**
 Principal: **Department of Transport and Main Roads**
 Location: **Hope Island, Queensland**
 Contract Value: **\$16,600,000**
 Completion Date: **January 2010**



Beenleigh Redland Bay Road Upgrade

Type of Project: **Road Construction**
 Principal: **Department of Transport and Main Roads**
 Location: **Loganholme, Queensland**
 Contract Value: **\$5,000,000**
 Completion Date: **March 2007**



Environment Management

Neumann Contractors are meeting the environmental challenges of the 21st century in a progressive manner and are proud of our ongoing commitment to ecologically sustainable development.

The company's environmental team includes environmental managers with significant experience in the dredging and construction industry.

Our strong working relationship with environmental authorities and leading environmental scientists has led to the development of important innovations, particularly in the management of acid sulphate soils.

Neumann's believes that a pro-active approach, involving integration of environmental and operational management, is the cornerstone of successful environmentally sensitive projects and positive client outcomes.

In recognition of our commitment to environmental best practice, Neumann Contractors have received both a National and State Case Earth Award for Environmental Excellence.

Comprehensive Environmental Service

Neumann Contractors environmental services range from dedicated environmental managers through to state-of-the art soil and water treatment equipment.

Our technical staff has all the skills and qualifications necessary to implement complex management plans backed by internal environmental auditing.

The company's inventory of test and measuring equipment means water quality; dust, noise and vibration monitoring can be provided in-house.

Our qualified trainers ensure that all levels of personnel receive on-going environmental training in best environmental practice and current legislation.

With over 50 years' experience in dredging and extraction, Neumann has valuable knowledge of development and licence approval processes.

Capability & Experience

Neumann Contractors has a proven track record in environmentally sensitive dredging and construction projects.

Neumann's success in this field has relied on our skill and expertise in:

- Management of environmental licences and compliance with strict statutory guidelines
- Implementation of complex environmental management strategies
- Large scale acid sulfate soils management including innovative hydro-sluicing and neutralisation treatment technology
- Dewatering in sensitive soil and water conditions
- Design and implementation of monitoring programs
- Interpretation of monitoring data and technical information
- Producing management plans and technical reports
- Internal and external environmental auditing



Quality Management

Neumann Contractors has a comprehensive Quality Management System in place. This system can be tailored to each individual project we undertake to ensure we deliver quality products and always meet our client's standards and project specifications. This is achieved through our detailed planning, implementation, testing and review processes which enable our team to consistently demonstrate a high level of quality on all projects.

Health and Safety Management

Neumann Contractors is committed to maintain a safe and healthy working environment for all employees and stakeholders. This is accomplished through the continuous improvement of our comprehensive occupational health and safety management systems which are utilised in all areas of the company's activities.

Contact Details

Should you require further information please contact

General Manager

Mr Bill Neumann

email: bill.neumann@neumann.com.au

Office Location

Building 20

13 Nuban Street

Currumbin Qld 4223

Phone: 07 5589 2746

Fax: 07 5589 2775

email: neumann.contractors@neumann.com.au

Website: www.neumanncontractors.com.au

