



Project: *Iluka Boat Harbour Dredging*

Principal:

NSW Trade and Investment

Location:

Iluka Boat Harbour, NSW

Contract Value:

approx. \$350,000

Completion Date:

January 2016



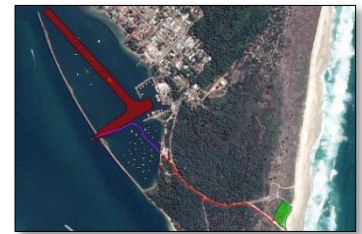
Iluka Boat Harbour Dredging – 2015/16

Neumann Contractors was engaged by the New South Wales Department of Finance and Services for Trade and Investment to undertake dredging works for the entrance channel to the Iluka Boat Harbour.

The works involved the dredging of the two approach channels to the Iluka Boat Harbour up to a depth of -3.0m below Iluka Port Datum. The total volume of marine sediments dredged was approximately 26,000m³.

Due to the depositional environment of the boat harbour, sediments had gradually accumulated in parts of the harbour since construction. Therefore, maintenance dredging was required to remove the accumulated sediment from both the navigation channels to the Iluka Boat Harbour.

The Nu Discovery (cutter suction dredge), a land based booster pump and support vessels were used for the project. The Nu Discovery is a new 250mm Cutter Suction Dredge and is ideally suited to this type of dredging working. It can be easily transported to remote sites, when dismantled the entire unit can be transported in 2 x 40' open top shipping containers.



Scope of Work

- Mobilisation of a 250mm cutter suction dredge, the Nu Discovery, 1 x booster pump and 2 km's 250mm poly pipeline.
- Dredging of 26,000m³ of marine sediments for the two harbour approach channels.
- Pumping the sediment through 2.0km of pipeline to the deposition site adjacent to Main Beach.
- Management of pumped material in a series of settling ponds.

Challenges

- Strict environmental limitations on noise and turbidity.
- Maintaining suitable access for the marine traffic to and from the Iluka Boat Harbour.



Dredge ***Nu-Discovery – Cutter Suction Dredge***
 Length ***11.3 m*** Gross Weight ***23 tonnes***
 Pipe Dia. ***250 mm*** Digging Depth ***1.2 – 6.5m***

