

Project: **Currumbin Creek Dredging - 2017**

Principal:

Gold Coast City Council

Location:

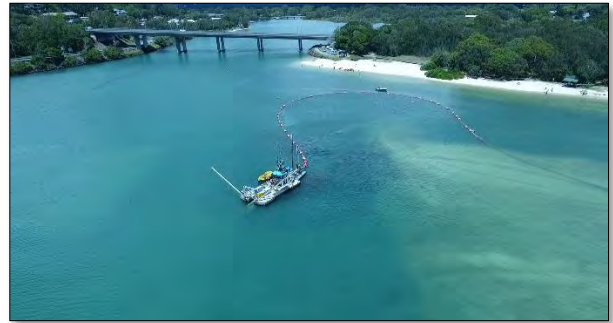
Currumbin Creek and Palm Beach, Qld

Contract Value:

approx. \$400,000

Completion Date:

December 2017

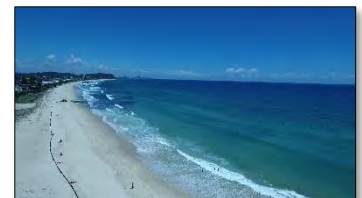


Currumbin Creek Dredging & Palm Beach Nourishment – 2017

Neumann Contractors have once again been engaged by the Gold Coast Council to undertake the dredging of Currumbin Creek for 2017. These works are part of a 4-6 year contract with the Gold Coast City Council for dredging and beach nourishment works at both Tallebudgera and Currumbin Creeks.

Neumann Contractors have undertaken the dredging works in Currumbin Creek for many years now, and the works are an integral part of the Gold Coast City Council's program to maintain and replenish the sand on Gold Coast beaches. This year over 33,000 m³ of clean sand was dredged from the Currumbin Creek to replenish the sand on Palm Beach. The sand is pumped overland and released on Palm Beach.

The Nu Enterprise, a 300mm Cutter Suction Dredge, a land based booster pump and up to 1.2km of pipeline were used to complete the works.



Scope of Work

- Mobilisation to site at Currumbin Creek the Nu Enterprise, a 300mm cutter suction dredge, 1 booster pump, 1.2 km 250mm poly pipeline.
- Dredging of 33,000m³ of sand from Currumbin Creek.
- Pumping the sand through 1.2km of pipeline to Palm Beach.
- Beach nourishment works along approximately 250m stretch of Palm Beach.

Challenges

- Strict environmental limitations on noise and turbidity.
- Maintaining suitable access for the public at all times and working on very busy beaches which must have public access open at all time.



Dredge **Nu-Enterprise – Cutter Suction Dredge**
 Length **18 m** Gross Weight **32 tonnes**
 Pipe Dia. **250 mm** Digging Depth **1.2 – 6.0m**

